

## What's Included

- iBoot-DC Unit
- Network Cable
- Quick Start Guide

## Available Online at

<http://dataprobe.com/support-iboot-dc>

- Complete Product Manual
- Device Management Utility
- Latest iBoot-DC Firmware
- Software Developer Tools

## Connections

- 1. Connect Network.** iBoot-DC supports 10/100 Ethernet using the cable supplied, or other suitable unshielded twisted pair (Cat 5) cabling. When power is connected to the iBoot-DC, the green Activity LEDs on the network connector indicates when the network connection is properly established.
- 2. Connect Powered Device.** Connect the device to be powered ON and OFF to the screw terminals marked OUT. Connect the positive lead to the + and the negative (ground) to the - . The Positive is switched. The standard connection is to the NO terminal. Screw terminal assemblies are removable for easier connections. With the positive connected to the NO terminal the power will be ON when the iBoot-DC displays ON. If the device has a power switch, turn it on, to allow iBoot-DC to control the power.



**Resistive Loads Only Maximum Switching Capacity :**  
**12A at 5-29.9VDC, 2A at 30-48VDC.**

- 3. Connect Power** Connect the DC power source to the terminals marked IN. Connect the positive lead to the + and the negative (ground) to the - . The iBoot-DC is default power On. The screw terminal assembly is removable for easier connection. The LED marked Output is on when the power is connected to the NC terminal.

## Web Browser Access

**Factory Default IP Address: DHCP Set or 192.168.1.254**

**Factory Default Security Credentials:**

The password is unique and based on the last 3 segments of the MAC address. The MAC address can be found on a sticker on the bottom of the unit.  
 ex: If your MAC address is 00-0d-ad-aa-bb-cc then the password is adminaabbcc.

Role	Username	Password
Administrator	admin	admin<last 3 MAC segments>

### Discover and/or Set the IP Address

If your network supports DHCP, the IP address of the iBoot will be automatically assigned. Find the IP Address of the iBoot using either from the DHCP Router/Server or use the Dataprobe Device Management Utility (DMU), available at <http://dataprobe.com/support-iboot-dc>. See Page 2 for more in the DMU.

Point your browser to the IP Address of the iBoot, then enter the Administrator Username and Password to access the complete setup features. Once the user is validated, the Control and Status is displayed.

To control the power, click on the appropriate button. During power cycling, the Power Status bar will indicate the temporary status, with a blue background. Once the cycle is complete, the status bar will revert to its original condition.

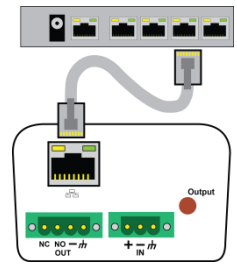


Fig. 1 Connect Network

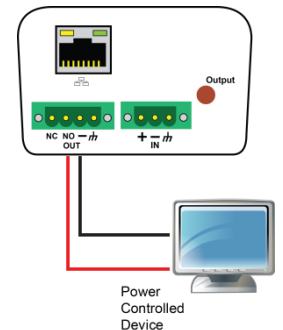


Fig. 2 Connect Device

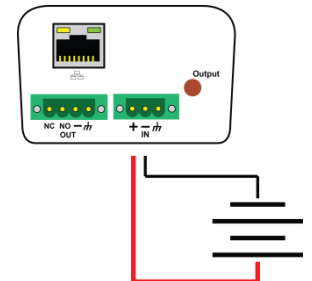


Fig. 3 Connect Power

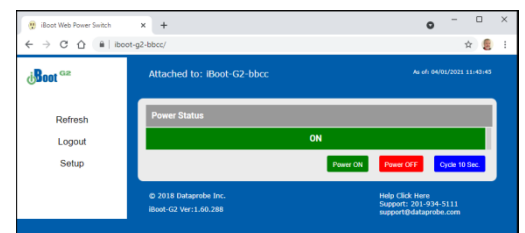
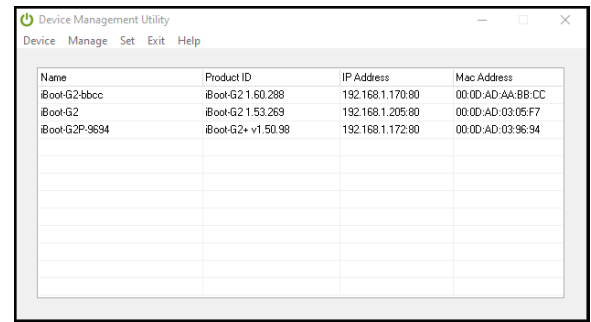


Fig. 4 Status and Control Page

## Changing the IP Address

**1. Device Management Utility** Obtain the Device Management Utility (DMU) from Dataprobe's website at <http://dataprobe.com/support-iboot-dc>.

- Open the DMU on a PC on the same physical network as the iBoot and select **Device > Discover** to display the current IP Address of the iBoot.
- Select **Set > Network Settings** to change the address. The IP address can only be set within the first two minutes of powering up the iBoot. The DMU will only work with iBoots on the same physical subnets as the PC



Name	Product ID	IP Address	Mac Address
iBoot-G2-bbcc	iBoot-G2 1.60.288	192.168.1.170:80	00:0D:AD-AA-BB:CC
iBoot-G2	iBoot-G2 1.53.269	192.168.1.205:80	00:0D:AD-03:05:F7
iBoot-G2P-9694	iBoot-G2+ v1.50.98	192.168.1.172:80	00:0D:AD-03:96:94

Fig. 5 Device Management Utility

Complete instructions for the DMU are provided with the download, and in the full iBoot-DC Manual.

**2. Web Page Setup** From the home page, click on Setup, then Network. Enter the new IP Address, Subnet Mask and Gateway, then click Save. Click the Reboot button (or press the reset button next to the power outlet LED) to restart the iBoot-DC with the new settings. To lock the settings, select IP Mode = Static. If IP Mode remains DHCP, the iBoot will obtain an address from a DHCP Server as soon as it finds one.

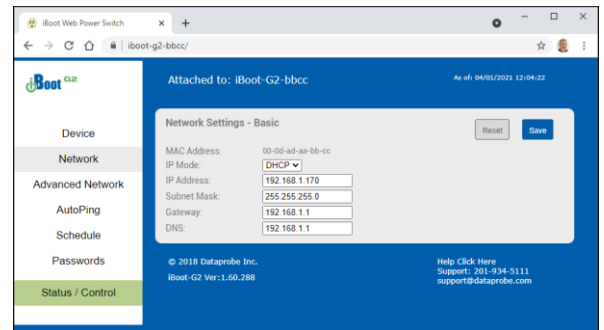


Fig. 6 Network Setup Page

To get all the benefits of your iBoot, register it: [dataprobe.com/product-registration](http://dataprobe.com/product-registration)

- Notification of Updates
- Expedited Warranty Service
- Exclusive Offers
- Advanced End-of-Life Notification

## Mounting Options

iBoot-DC is suitable for desktop or shelf mounting. A mounting kit for wall and DIN rail mounting is available. Order part:

1920034 Wall and DIN Mounting Kit



1920034 Wall and DIN Mounting Kit

Dataprobe Inc  
1 Pearl Court, Suite B  
Allendale New Jersey 07401

Technical Support  
tech@dataprobe.com 201-934-5111  
www.dataprobe.com/support 201-934-9944