

## UPGRADE INSTRUCTION

1 Determine the Hardware revision of your control card. This will determine which firmware you can install. The Hardware revision is located in on the front edge of the Control Card as shown:

2 Download the latest version of the Control Card firmware that is appropriate for your hardware.

This .zip file contains both the Loader Program and the upgrade file. Extract both files and open the directory to which they were extracted.

3 Remove the Control Card from the nest.

4 Connect Pins 2 and 3 of the serial port together. This can be done with a simple jumper plug made from a female D9 connector. A jumper from a breakout box can also be used.

5 Re-insert the control card into the nest and power up the nest and connect the network cable to it. Make sure the nest is powered. The control card can be removed and re-inserted while the nest is powered without affecting the position of any A/B Switch cards.

6 Start FirmwareLoader.exe on your computer.

7 Enter the IP address of K16 control card.

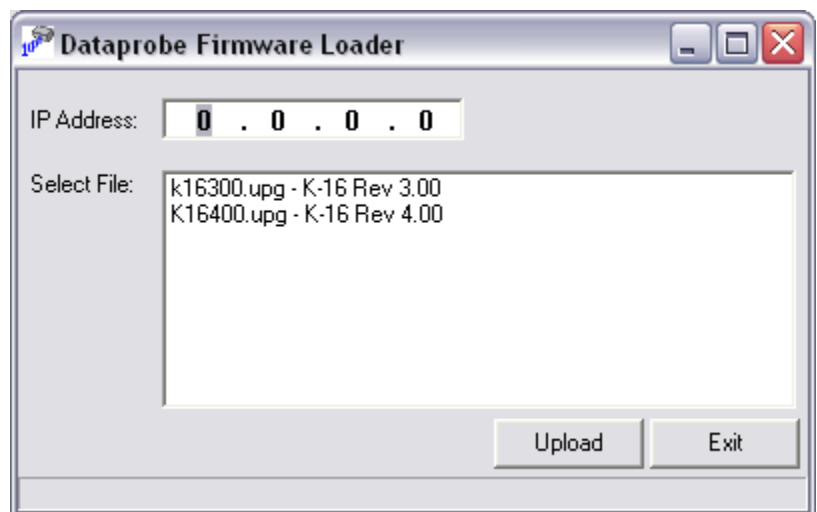
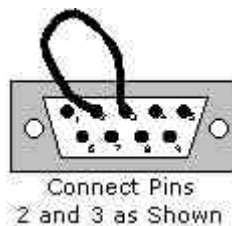
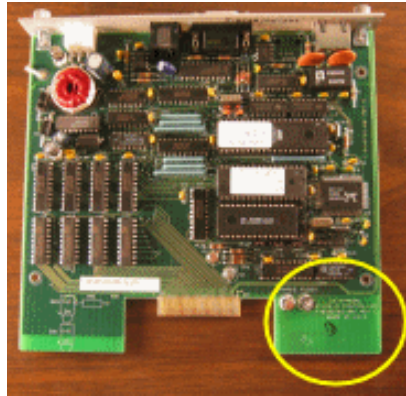
8 Select the version you wish to upgrade to.

9 Click on Upload to begin the upgrade

10 Remove the control card from the nest

11 Remove jumper between pins 2 and 3.

12 Re-insert the control card into the nest



Technical Support Hotline: (201) 934-5111