

# T-APS Series

Minimize Downtime with Automatic Protection Switches!

## Easiest Way to Minimize Downtime

Minimize downtime to keep your critical systems running and your customers happy. With the T-APS Series, you can quickly restore critical lines and equipment by easily switching over to redundant services.

The T-APS Series is designed to continuously monitor circuits and switches. T-APS switches make redundancy switches easy. It is ideal for all T-1 and E-1 networks where downtime is not an option. With the T-APS in control, you can have peace of mind knowing that your critical applications will stay up and running.

Each T-APS-R card provides a complete independent T-1 / E-1 protection switch, and all cards are managed from one network or serial interface with simple web pages and telnet menus.

## Top Features:

### Backup Switching on Autopilot

T-APS continuously monitors T-1 or E-1 circuits and switches to the operational path, and provides automatic failover switching between redundant lines

Designed for both line protection and equipment redundancy

### Simple Programming to Onsite Applications

A self-contained, standalone unit capable of being powered by A/C or 48VDC sources, and line connections are standard RJ45 T1 and E1 (120 Ohm) connections

T-APS features complete manageability via terminal or SNMP manager, plus status relay alarms

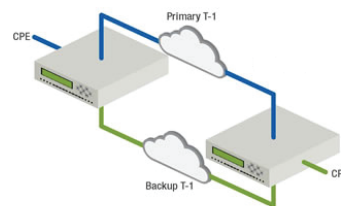
### Multiple Circuit Switching Options

Each T-APS-R card provides a complete independent T-1 / E-1 protection switch, and all cards are managed from one network or serial interface with simple web pages and telnet menus

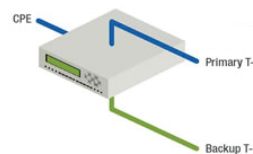
The chassis supports either 48VDC or 120/240 VAC with external power supplies



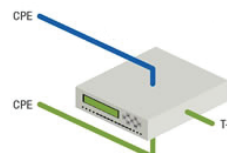
### T-APS – End to End Protection



### T-APS – Last Mile Redundancy



### T-APS – Redundant CPE Equipment



## Additional Features

Self-Contained, Standalone & Rack Mount	Ideal for Customer Premise, Remote Site and Data Center Applications
Line and Equipment Protection	Establish redundant links, or failover to standby routers and Channel Banks
T1 and E1 Interface	Select Interface type and all parameters
1+1 and 1:1 APS Protection Modes	1+1 Mode transmits on both primary and standby link simultaneously. 1:1 Mode transmits on active link only
Selectable Switching Activation Thresholds	Define failover parameters. Monitors both active and standby circuits and switches to best available
Configurable via Front Panel or RS-232 Port	Craft port allows on-site access and Out-of-Band management
LED Indicators	Multiple LED Indicators that identify current T-APS Status
SNMP Manageable	Integrate into your network management scheme

## Specifications

Subject to Change Without Notice

<b>Physical:</b>	Height: 2.75 in   Width: 8.0 in   Depth: 9.5 in   Weight: 2.5 lbs
<b>Power:</b>	90-250V AC 47-63Hz and -48V±5V DC. Simultaneous use with DC priority

### T1 Interface

Line Code	AMI B8ZS
Frame Format	SF ESF Unframed
Bit Rate	1.544M b/s
Impedance	100 Ohms Resistive Balanced
Input Level	0-36 dB
Output Level	6V p-p
Line Build Out	0-655 feet

### E1 Interface

Bit Rate	2.048 M b/s
Line Code	AMI HDB3
Frame Format	CCS CAS CCS+CRC CAS+CRC Unframed
Impedance	120 Ohms Resistive Balanced
Input Level	0-43 dB
Output Level	6V p-p
Line Build Out	0-655 feet

## For More Information

[www.dataprobe.com/t-aps-series/](http://www.dataprobe.com/t-aps-series/)

Phone: 201-934-9944

Fax: 201-934-9090

Email: [sales@dataprobe.com](mailto:sales@dataprobe.com)

Website: [dataprobe.com](http://dataprobe.com)

Follow Us:



**dataprobe**  
Making Every Network More Reliable