

Quick Start Guide



What's Included

- iPIO-xx Unit
- Network Cable
- Quick Start Guide
- A/C Power Supply

Available Online at

dataprobe.com/support-ipio

- Complete Product Manual
- Device Management Utility
- Latest Firmware
- Software Developer Tools

Connections

- 1. Connect Network.** iPIO supports 10/100 Ethernet using the cable supplied, or other suitable unshielded twisted pair (Cat 5) cabling. When power is connected to the iPIO, the green Activity LEDs on the network connector indicates when the network connection is properly established.
- 2. Connect Inputs. (2 Connections per Channel)**
Connect the inputs to the iPIO using the screw terminals. Inputs can be either dry relay or switch contacts, or a +VDC voltage (3 to 30 V), referenced to a common ground. Screw terminals are removable for easy installation. Terminals for each circuit are marked + and G. When connecting dry relay contacts, the polarity is not significant.
- 3. Connect Relays. (3 Connections per Channel)**
Relays are Form C. Connect to the Common (C), Normally Closed (NC) and Normally Open (NO) as marked. When the iPIO-8 relay is in the Open Condition, the Common is connected to the Normally Open. In the Closed state, the Common and Normally Closed are connected.
- 4. Connect Power.** Each unit is supplied with a n A/C Power supply. Connect to suitable A/C source, then power up the iPIO device. The iPIO-2 supports Power over Ethernet (PoE). Consult the complete manual for more details.



The iPIO is Factory set for Dry Contact Input Only.

Prior to Connecting +VDC, Jumpers must be configured.

See full manual or contact Dataprobe Technical Support.

Relay Specifications

Rating (resistive)	0.5 A 120 VAC or 1 A 24 VDC
Max Carrying Current	2 A
Max Switching Power	60 AV, 24 W
Max Switching Voltage	120 VAC/60 VDC
Max Switching Current	1A
Life Expectancy	5 Million Operations Mech. 100K Oper. at rated load

Web Browser Access

Factory Default IP Address: 192.168.1.254

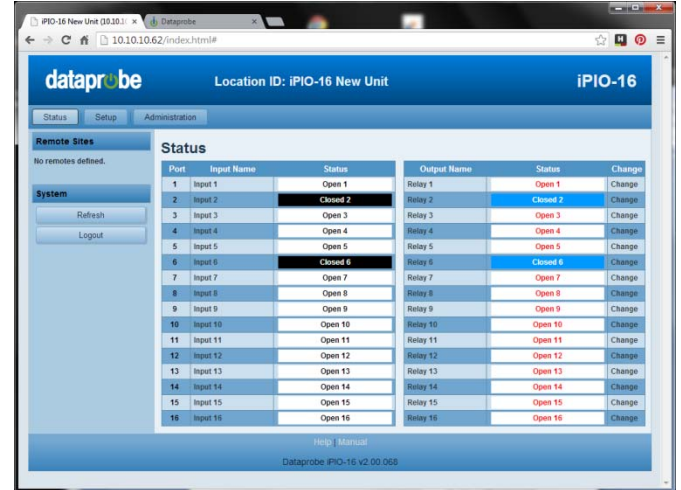
Factory Default Security Credentials:

Role	Username	Password
Administrator	admin	admin

To access the iPIO from the default IP Address, requires the PC to be on the same local network (IP Address 192.168.1.nnn). If it is not, change the iPIO IP Address using one of the methods on the following page.

After pointing the browser to the IP Address of the iPIO, enter the Administrator Username and Password to access the complete setup features. Enter the User credentials to access only the power control. Once the user is validated, the Control and Status is displayed.

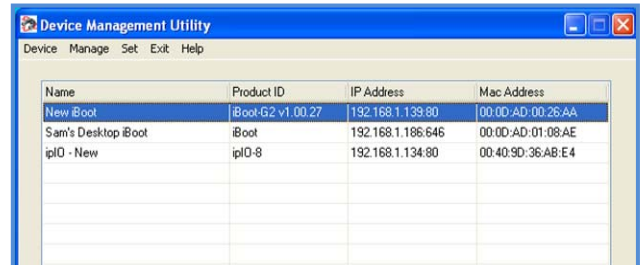
Input and Output status is updated automatically. To control any Output Relay, click on the Change link adjacent to the Relay Status.



Changing the IP Address

1. Device Management Utility Obtain the Device Management Utility (DMU) from Dataprobe's website at dataprobe.com/support-ipio. The DMU provides the easiest means to find and configure your iPIO for use. It can discover all the iPIOs on your network, display the current IP address of each, and allow setting of any valid IP address.

Note: The IP address can only be set within the first two minutes of powering up the iPIO. The Setup Utility will only work with iPIOs on the same physical subnets as the PC.



The iPIO Setup Utility can also be used to return an iPIO to its Factory Default condition. This can be used to recover an iPIO with a lost password. Highlight an iPIO from the display and click Factory Defaults. This must also be done within the first two minutes of powering up the iPIO.

Complete instructions for the DMU are provided with the download, and in the full iPIO Manual.

2. Web Page Setup From the home page, click on Setup, then Network. Enter the new IP Address, Subnet Mask and Gateway, then click Save. Click the Reboot button (or press the reset button next to the power outlet LED) to restart the iPIO with the new settings.

3. DHCP From the Home page, click on Setup, then Network. Change the IP Mode from Static to DHCP. Click Save, then Reboot. The iPIO will obtain its network settings from the server. Check the server, or use the Device Management Utility to obtain the new settings.



Dataprobe Inc
60E Commerce Way
Totowa New Jersey 07512

Technical Support
support@dataprobe.com 201-934-5111
www.dataprobe.com/support 201-934-9944